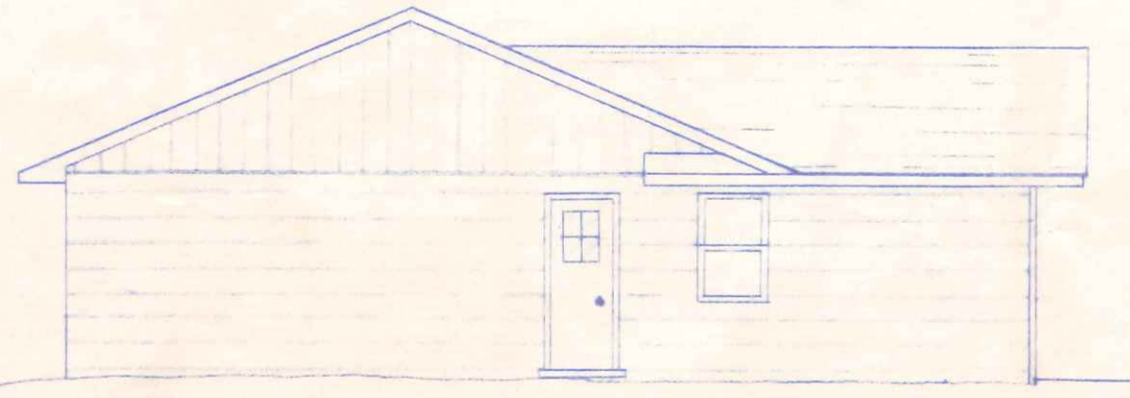
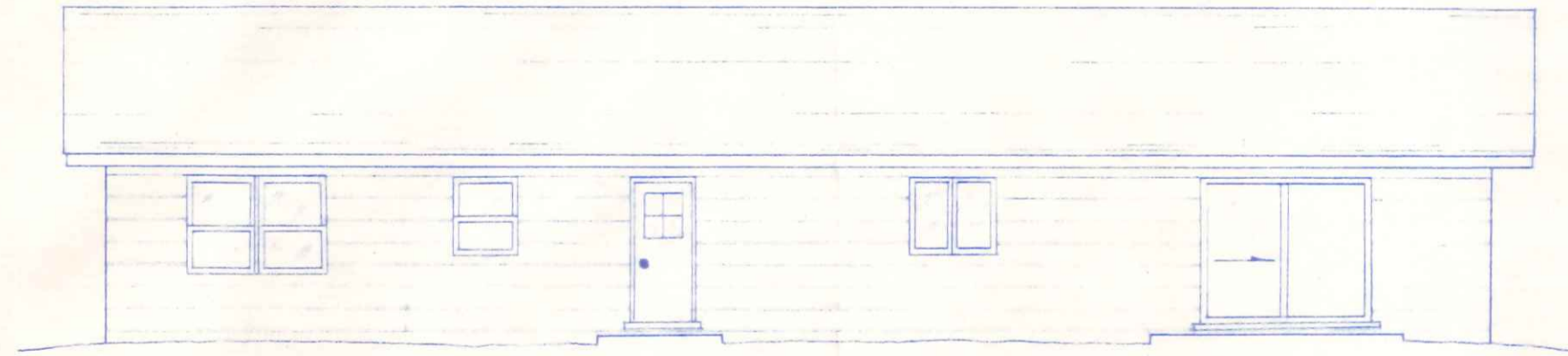


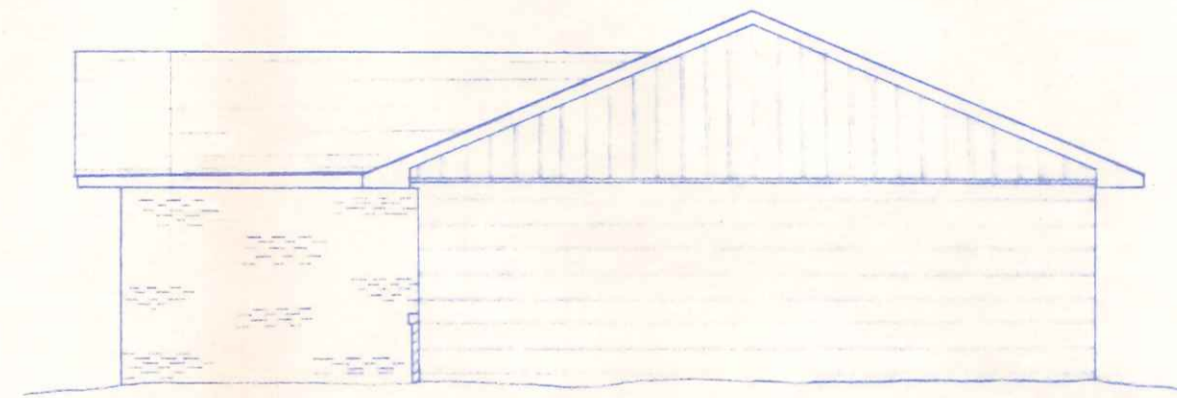
FRONT ELEVATION  
1/4" = 1'-0"



RIGHT ELEVATION  
1/8" = 1'-0"



REAR ELEVATION  
1/8" = 1'-0"



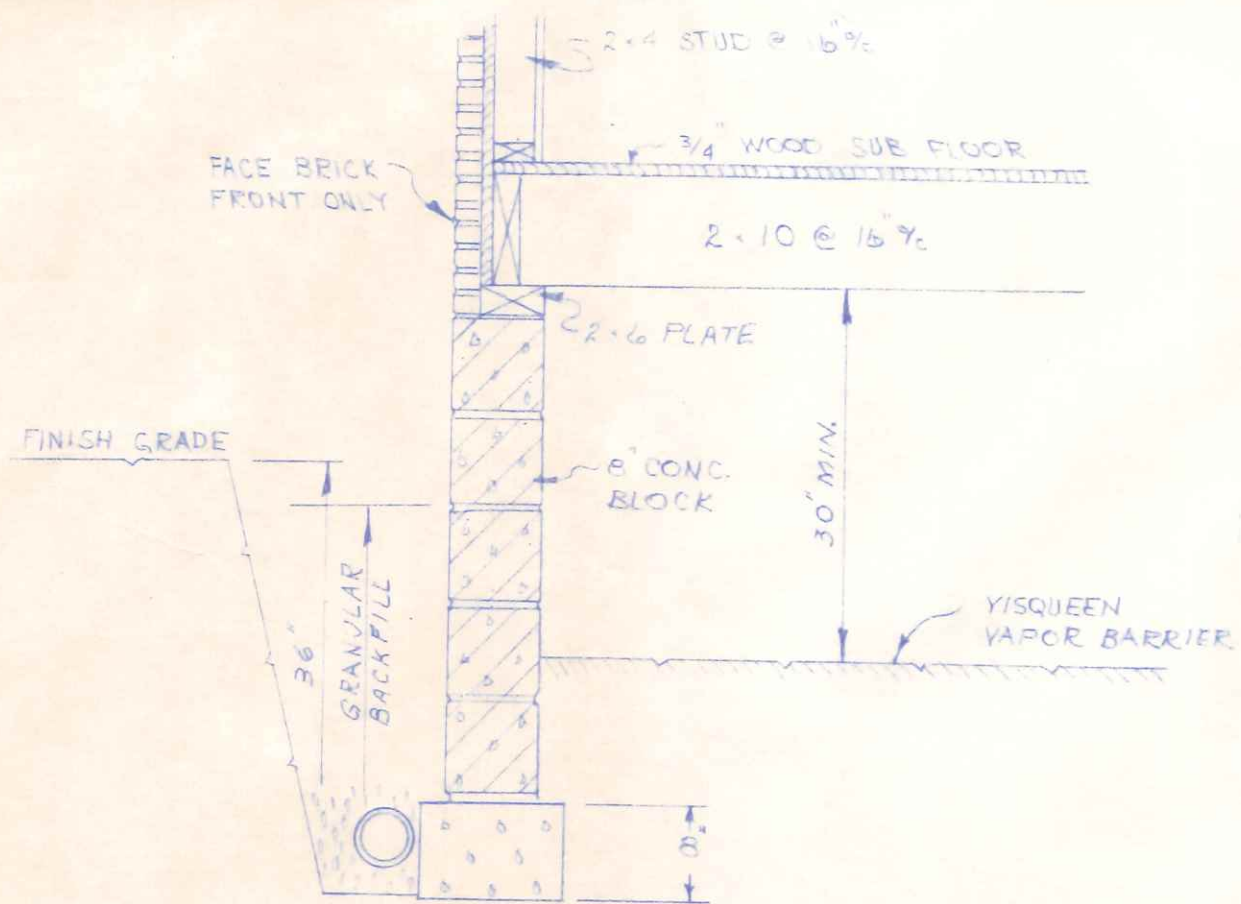
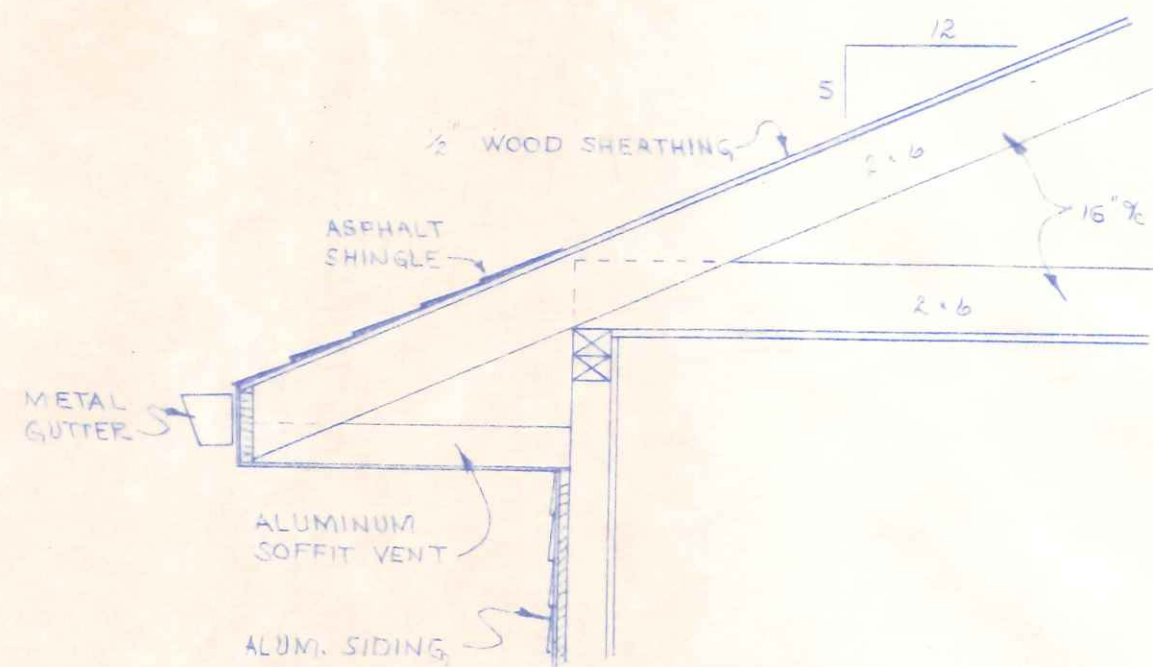
LEFT ELEVATION  
1/8" = 1'-0"

CITY OF NAPOLEON  
BUILDING DEPT.  
Plan Approval  
By RGH Date 9-3-88

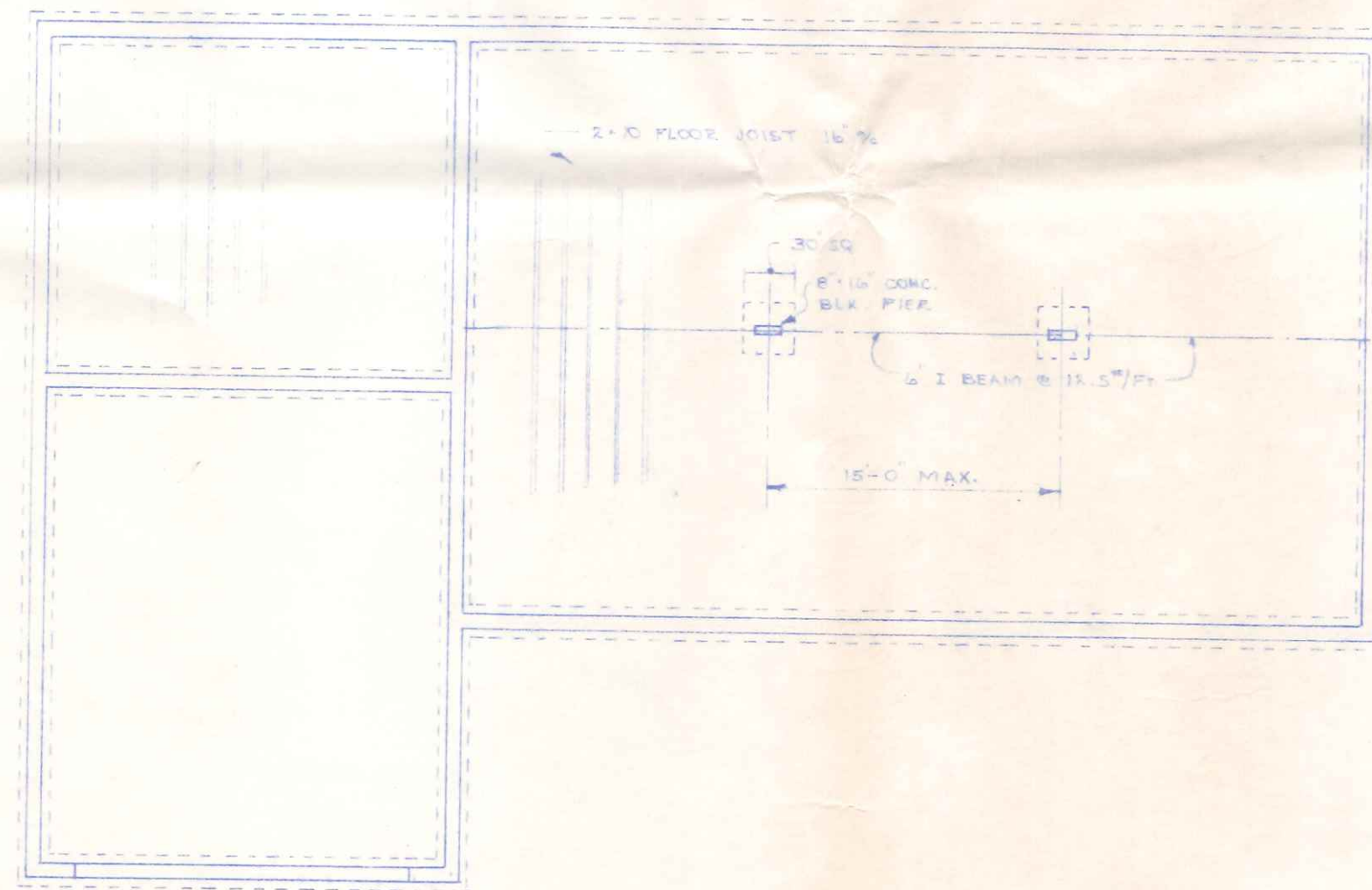
2  
3

DATE:  
MAY 1979  
DWG. BY:  
R. W. W.

BECK'S CONSTRUCTION CO.  
HOUSE PLAN NO. 116



WALL SECTION  
3/4" = 1'-0"



FOUNDATION PLAN  
1/8" = 1'-0"

CITY OF NAPOLEON  
BUILDING DEPT.  
Plan Approval  
By RCM Date 9-3-86

3  
3

DATE:  
MAY, 1979  
DWR. BY:  
R.W.W.

BECK'S CONSTRUCTION CO.  
HOUSE PLAN NO. 116

X-7